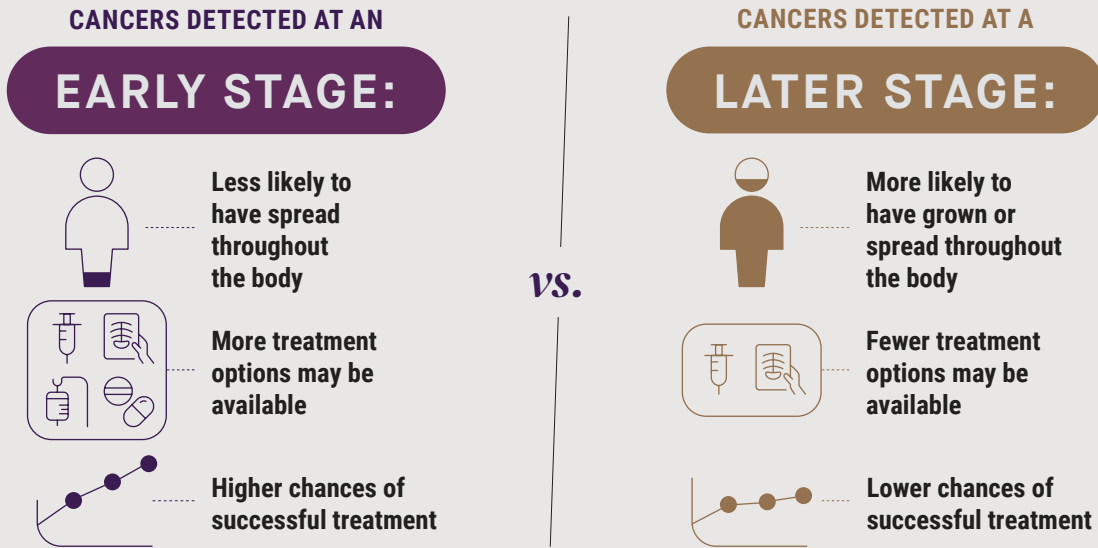


DETECTING CANCER EARLY CAN IMPROVE OUTCOMES



Survival is more likely when cancer is diagnosed in early stages.

(Siegel RL, et al. Cancer statistics, 2022. CA Cancer J Clin. 2022;72:7-33)

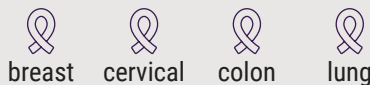
Many cancers don't show symptoms until later stages, when treatment options may be limited.

Cancer screening checks for cancer in people who have no symptoms. Several screening tests have been shown to detect cancer early and increase the chance of survival.

(U.S. Preventive Services Task Force. September 2017.)



CANCERS COMMONLY SCREENED FOR IN THE UNITED STATES:



About **70%** of cancer deaths

are caused by cancers that are not commonly screened for.

New tests are needed that can effectively detect many types of cancer early to give people greater chances of improved outcomes.



The **PATHFINDER 2 Study** is looking to learn more about a blood test that may be able to detect cancer early and predict which part of the body the cancer may be coming from.



The study test looks for small pieces of genetic material, or DNA, in the blood that may indicate the presence of cancer.

If you're interested in learning more, visit www.joinpathfinder2study.com and talk to your doctor.

The PATHFINDER 2 Study does not replace any cancer screening tests that your healthcare provider recommends.

GRAIL